

Sfpns 3

Flat wagon Wagon plats

Flachwagen Vagone pianale

Technical data

Length over buffers	21 700 mm
Loading length	20 300 mm
Loading width	2 458 mm
Platform height	1 440 mm
Height of side stanchions	1 635 mm
Height of head stanchions	1 700 mm
Height of head boards	400 mm
Height of bolsters	65 mm
Tare weight	25 000 kg
Payload (C - line)	57 000 kg
Payload (D - line)	65 000 kg
Minimum curve	50 m
Maximum speed	100 km/h

Technische Daten

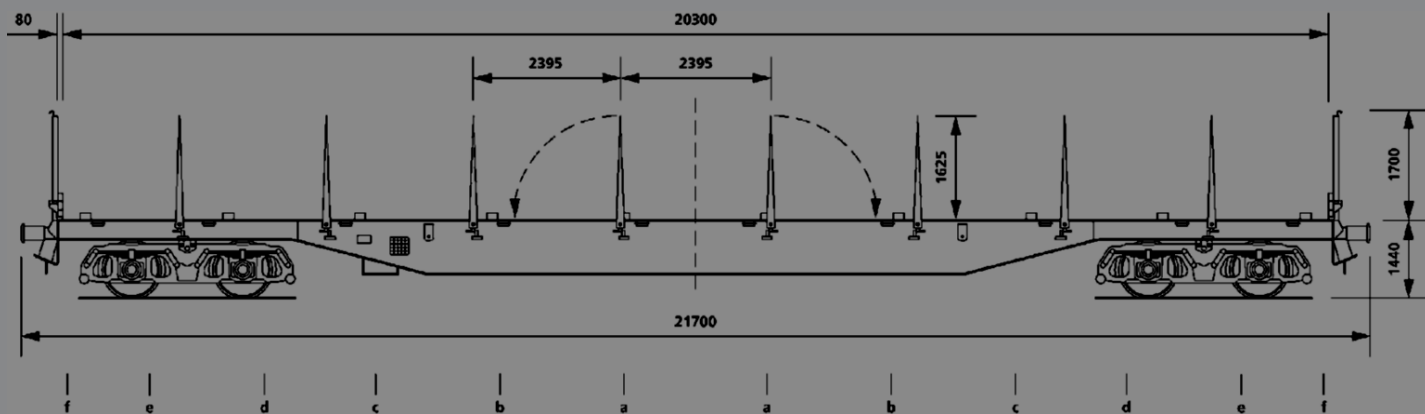
Länge über Puffer	21 700 mm
Ladelänge	20 300 mm
Ladebreite	2 458 mm
Fußbodenhöhe über Schienenoberkante	1 440 mm
Höhe der Seitenrungen	1 635 mm
Höhe der Stirnrungen	1 700 mm
Höhe der Stirnwand	400 mm
Höhe der Ladeschwellen	65 mm
Eigengewicht	25 000 kg
Lastgrenze (C - Linie)	57 000 kg
Lastgrenze (D - Linie)	65 000 kg
Min. befahrbarer Kurvenradius	50 m
Max. Geschwindigkeit	100 km/h

Données techniques

Longueur hors tout	21 700 mm
Longueur utile	20 300 mm
Largeur utile	2 458 mm
Hauteur du plancher	1 440 mm
Hauteur des ranchers latéraux	1 635 mm
Hauteur des ranchers de bout	1 700 mm
Hauteur des haussettes de bout	400 mm
Hauteurs des traverses d'appui	65 mm
Tare	25 000 kg
Limite de charge (C - ligne)	57 000 kg
Limite de charge (D - ligne)	65 000 kg
Rayon de courbure minimum	50 m
Vitesse maximum	100 km/h

Dati tecnici

Lunghezza sopra respingenti	21 700 mm
Lunghezza di carico	20 300 mm
Larghezza di carico	2 458 mm
Altezza della piattaforma	1 440 mm
Altezza montanti laterali	1 635 mm
Altezza montanti di testa	1 700 mm
Altezza delle tavole	400 mm
Altezza del rinforzo	65 mm
Tara	25 000 kg
Carico utile (C - linea)	57 000 kg
Carico utile (D - linea)	65 000 kg
Raggio min. di curvatura	50 m
Velocità massima	100 km/h



Wagon is fully RIV approved for Continental Europe and UK channel traffic with the exception of Spain, Portugal and Finland.

Loads can be distributed on rigid bolsters.

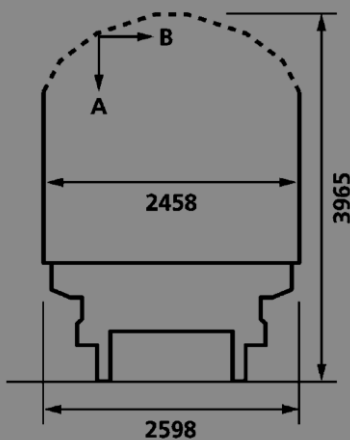
The maximum wheel pressure on the floor board is 5 tonnes.

The wagon has 8 collapsible stanchions per side. Those are each fitted with a hook for load security purpose. Winches are also fitted to enable tensioned strap security.

The head stanchions are removable and headboards can be deposited in specially fitted stanchion holds.

The headboards are collapsible and the wagon can be loaded/unloaded from head ramps.

Height above rail (mm)	Related ½ width (mm)	Height above rail (mm)	Related ½ width (mm)	Height above rail (mm)	Related ½ width (mm)
3.140	1.271	3.420	1.126	3.700	763
3.150	1.266	3.430	1.121	3.710	749
3.160	1.261	3.440	1.109	3.720	736
3.170	1.256	3.450	1.095	3.730	723
3.180	1.251	3.460	1.081	3.740	709
3.190	1.246	3.470	1.068	3.750	696
3.200	1.241	3.480	1.055	3.760	666
3.210	1.235	3.490	1.041	3.770	636
3.220	1.230	3.500	1.028	3.780	606
3.230	1.225	3.510	1.015	3.790	576
3.240	1.220	3.520	1.001	3.800	547
3.250	1.215	3.530	988	3.810	517
3.260	1.209	3.540	975	3.820	487
3.270	1.204	3.550	962	3.830	457
3.280	1.179	3.560	948	3.840	427
3.290	1.194	3.570	935	3.850	397
3.300	1.189	3.580	922	3.860	367
3.310	1.183	3.590	909	3.870	327
3.320	1.178	3.600	895	3.880	307
3.330	1.173	3.610	882	3.890	278
3.340	1.168	3.620	869	3.900	248
3.350	1.163	3.630	856	3.910	218
3.360	1.157	3.640	842	3.920	188
3.370	1.152	3.650	829	3.930	158
3.380	1.147	3.660	816	3.940	128
3.390	1.142	3.670	803	3.950	98
3.400	1.137	3.680	789	3.960	69
3.410	1.131	3.690	776	3.965	53



Distribution of load		
Loading Length	On floor	
a-a 2.0m	32.0t	18t
b-b 5.9m	38.0t	22t
c-c 9.8m	45.0t	27.5t
d-d 13.7m	50.0t	30t
e-e 17.6m	60.0t	32t
f-f 20.0m	65.0t	30t
c-e 3.9m	32.5t	15t

Payload	A	B	C	D	
S	39	47	57	65	**
120	0.00				